

# EVER Pharma D-mine<sup>®</sup> Pen

Pen injector for Apomorphine 10 mg/mL

## Instructions for Use

with Apomine<sup>®</sup> Intermittent 3 mL Cartridges

Apomorphine hydrochloride hemihydrate solution for injection



For subcutaneous use



## TABLE OF CONTENTS

Introduction	4	Confirmed Life Span	27
Description of Parts of D- <i>mine</i> <sup>®</sup> Pen	6	Warranty	28
Pen preparation / Changing Cartridge	7	Disposal	30
Attachment of Pen Needle	10	Labelling and Symbols	31
Priming / Function Check	12	Manufacturer / Distributor	32
Setting the Dosage	14		
Injection	15		
Removal of Pen Needle	16		
Attachment of Pen Cap	18		
Additional Information	19		
Storage and Care	22		
Warnings / Important Risk Information	24		

## INTRODUCTION

This manual contains instructions for using, storing and cleaning your EVER Pharma *D-mine*<sup>®</sup> Pen. The carton contents include 1 EVER Pharma *D-mine*<sup>®</sup> Pen, 1 Pen Case, 1 Instruction for Use. Note: Carton does not include pen needles or 3 mL cartridges. You should read the instructions in this manual carefully, even if you have used *D-mine*<sup>®</sup> Pen or other pen delivery systems before. The *D-mine*<sup>®</sup> Pen is a maintenance-free and reusable injector with an automatic spring driven delivery-system. The *D-mine*<sup>®</sup> Pen fulfils the regulations of the EU directive on medical products and has been proved according to 93/42/EEC and harmonized standards and has been marked with a CE symbol (see page 30). The *D-mine*<sup>®</sup> Pen also fulfills Australian and New Zealand regulatory requirements.

Indication: Pen injector for Apomine<sup>®</sup> Intermittent in 3 mL cartridges (Apomorphine hydrochloride hemihydrate 10 mg/mL) from Pfizer Australia Pty Ltd.

Intended Use: The intended purpose of the *D-mine*<sup>®</sup> Pen is to deliver Apomorphine subcutaneously in patients with Parkinson's disease on a daily basis. The *D-mine*<sup>®</sup> Pen is intended to be used by self-injecting adult patients, health care professionals as

well as third parties such as adult relatives and carers. Please refer to the product information of the pharmaceutical product. Before using the *D-mine*<sup>®</sup> Pen wash your hands. You will need some surgical wipes and one needle in its protective cone. Using a surgical wipe, clean the area of skin where you plan to inject the medicine and around it. Inject into an injection site on the front of your waist (abdomen) or your outer thighs under the skin (subcutaneously) as shown by your doctor or nurse. Change your injection site each time you use the *D-mine*<sup>®</sup> Pen. Do not inject into an area of skin that is sore, red, infected or damaged. You must never inject yourself directly into a vein (intravenously) or muscle (intramuscularly).

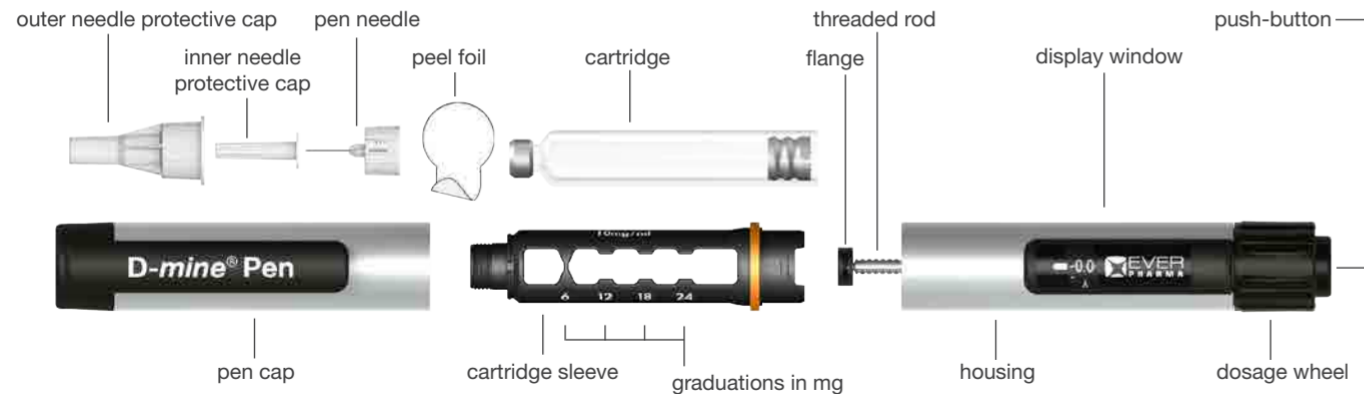
Compatible Pen cartridges and needles:

- Apomine<sup>®</sup> Intermittent 3 mL cartridges (Apomorphine hydrochloride hemihydrate 10 mg/mL) from Pfizer Australia Pty Ltd. proved according to ISO EN 11608-1
- BD Micro-Fine Ultra™ needles 29 to 31 gauge (diameter 0.25 – 0.33 mm) and 5 - 12.7 mm length.
- Pen needles from other manufacturers can be used according to their stated compatibility details.

Your *D-mine*<sup>®</sup> Pen can deliver doses from 0.5 to 6.0 mg, in increments on the printed scale of 0.5 mg (corresponds to 50 µL per increment). If you have any questions relating to your *D-mine*<sup>®</sup> Pen, your ANSSER Nurse will be happy to help (see page 23).

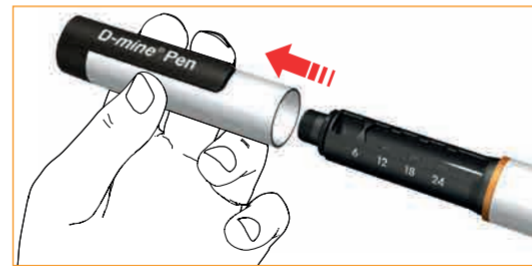
## DESCRIPTION OF PARTS OF D-mine® PEN

Note: The carton does not include pen needles or 3 mL cartridges.



## PEN PREPARATION / CHANGING CARTRIDGE

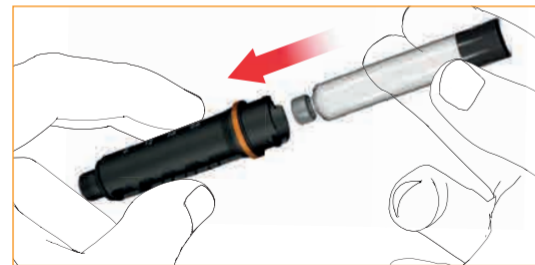
**1** Remove the pen cap.



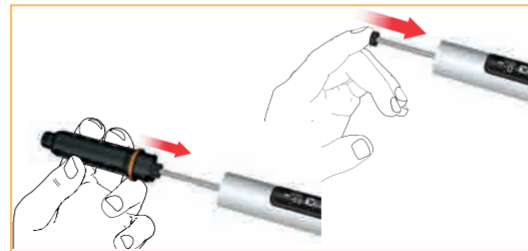
**2** Remove the cartridge sleeve by twisting it clockwise. You will hear a click. Remove the empty cartridge if necessary.



- 3** Insert the new cartridge into the cartridge sleeve.



- 4** Push the threaded rod back completely. This is best performed using your finger tip (but you can also use the new cartridge to push the rod in).



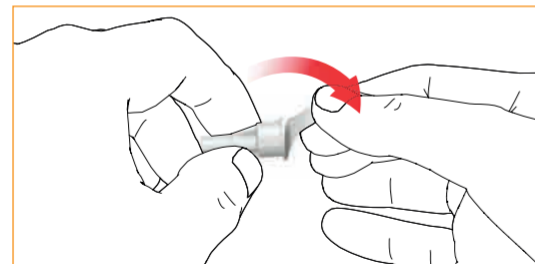
- 5** Push the cartridge sleeve into the housing and turn anti-clockwise to lock. You will hear a click.



## ATTACHMENT OF PEN NEEDLE

Follow the instructions for use of your pen needle.

- 1 Pull off the peel foil.



- 2 Click on / twist on the pen needle to the cartridge sleeve. Check that the pen needle is attached correctly.



- 3 Remove the outer needle protective cap. Keep the outer needle protective cap to safely remove and dispose of the pen needle after use.



- 4 Remove and dispose the inner needle protective cap.



## PRIMING / FUNCTION CHECK

The function check ensures that any remaining air in the cartridge is removed and that no blockage is present in the needle. Priming is recommended before every use, including cartridge change and attachment of pen needles.

- 1 Dial the test dose forward by turning the dosage wheel. Check the dialed dose by looking vertically from above and not at an angle onto the display, so that the symbol “ $\delta$ ” is clearly displayed.



- 2 For the function check, hold the D-mine® Pen pointing upwards and gently tap the cartridge sleeve, so that the air can rise to the top.



- 3 Press the push-button.



- 4 A few drops of medicine will emerge from the pen needle tip.

If no drops emerge, repeat steps 1 to 4. If after several function checks no drops emerge, change the pen needle and repeat the function check (steps 1 to 4). If still no drops emerge or if you have any concerns, please call the free telephone support service mentioned on page 23.



## SETTING THE DOSE



### Dial the required dose

Dial the required dose by turning the dosage wheel clockwise. Correct the dose by turning in anti-clockwise direction. Check the dialed dose by looking vertically from above and not at an angle onto the display, so that the numbers are clearly identified.

Note: Each “-” marking on the dose dialer represents 0.1 mg of medicine. You will hear a click for each increment you dial. Do not rely on counting these clicks to measure the correct dose.

### Safety stop

The medication dose that can be set on the D-mine<sup>®</sup> Pen is limited to the amount remaining in the cartridge. If the amount of medicine left in the cartridge is no longer sufficient for the desired dose, the dosage wheel cannot be turned any further in a clockwise direction.

## INJECTION



**Note:** You can interrupt the injection by releasing the push-button. The remaining amount of medicine not delivered can be seen on the display and can be injected by pressing the push-button again.

- 1** Please refer to the Product Information of the pharmaceutical product and use the injection technique as recommended by your physician and/or your ANSSER nurse. Press the push-button in fully for injection. Hold the push-button fully down during medication discharge.
- 2** After the medication has been completely discharged, wait for 6 seconds and then pull out the pen needle slowly. You may either keep the push-button pressed or release it during the 6 seconds.
- 3** Check that the display is at the “0.0” position to confirm full dose delivery.



## REMOVAL OF PEN NEEDLE AFTER EACH INJECTION

### Option 1:

Place the outer pen needle shield in the appropriate left notch of your carrying case.

The opening of the needle shield should be pointing up. Carefully insert the needle (attached to the pen) into the opening of the shield. Without holding onto the shield, push down firmly and turn counter-clockwise to twist off the pen needle. Discard the used needle into a sharps bin.

Note: The larger notch located on the right hand side of the carrying case fits to needles used by healthcare professionals.



### Option 2:

Carefully attach the outer needle protective cap on the pen needle.

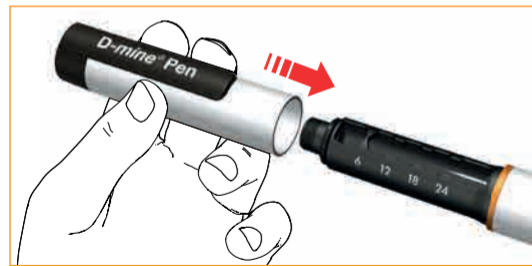


Twist off the pen needle by turning the outer shield clockwise and dispose it correctly, according to the advice of your physician and/or your ANSSER nurse. Professional health care personnel should follow the specific directions for health care personnel including, without limitation, directions regarding recapping and disposal. To obtain the specific directions, please consult a physician.



## ATTACHMENT OF PEN CAP

Attach the pen cap securely after each use.



## ADDITIONAL INFORMATION

### Audible and tactile indications

Your *D-mine*<sup>®</sup> Pen features the following audible and/or tactile indications:

#### Remove/Lock Cartridge Sleeve

When removing or locking the cartridge sleeve an audible signal and a noticeable resistance will be provided.

#### Dose Dialing

During dose dialing and dose correction your *D-mine*<sup>®</sup> Pen provides an audible signal and a noticeable resistance for each dialed step.

#### Injection

The medication discharge of your *D-mine*<sup>®</sup> Pen is perceptible. An audible signal is provided during the discharge and stops after the dialed amount of medication has been discharged completely.

## Safety stop

The dose that can be set on the *D-mine*<sup>®</sup> Pen is limited to the amount remaining in the cartridge. If the amount of medicine left in the cartridge is no longer sufficient for the desired dose, the dosage wheel cannot be turned any further in a clockwise direction.

- Do not try to force the dosage wheel to turn further.
- Note the remaining dose that can be dispensed and inject.
- Change the cartridge and pen needle, and carry out function checks (Chapter “Priming / Function Check” step 1 – 4).
- Dial and inject the outstanding dose.

## General

Do not use the *D-mine*<sup>®</sup> Pen if it is damaged or if you have any doubts about its correct functioning.

Once the cartridge has been inserted, it can remain in your *D-mine*<sup>®</sup> Pen until empty. Please follow the storage instructions provided by the manufacturer of your medication.

When changing the cartridge you should ensure that a new cartridge is inserted into the cartridge sleeve. Partially used cartridges may not be inserted into the cartridge sleeve.

You must use a new needle with each injection because the needles

- are sterile and may be used just once in order to avoid infections
- may become blunt after each usage and therefore more painful to use

Please follow local regulations in your country concerning the handling of potentially infectious materials.

## STORAGE AND CARE

Please store and handle your needles and cartridges according to the respective instructions for use.

After each use, securely attach the pen cap. Always keep your *D-mine*<sup>®</sup> Pen in the carrying case, without a pen needle attached.

Use and store your *D-mine*<sup>®</sup> Pen at a temperature between 5 and 35°C. Failure to observe this can reduce the life expectancy of your *D-mine*<sup>®</sup> Pen. If a cartridge of Apomine Intermittent is in the Pen, the Pen should be kept below 25°C.

Even though your *D-mine*<sup>®</sup> Pen is robust, it can be damaged. Please handle your *D-mine*<sup>®</sup> Pen with care. Protect it from water, dust and moisture.

A damp cloth is sufficient to clean your *D-mine*<sup>®</sup> Pen. Please do not use alcohol, other solvents or cleaning agents. Never immerse your *D-mine*<sup>®</sup> Pen in water, as this could damage the pen.

If you have any questions or problems relating to your *D-mine*<sup>®</sup> Pen, your ANSSER nurse will be available at the toll-free number to help. Please contact your ANSSER nurse to return your defective *D-mine*<sup>®</sup> Pen to:

Australia:

Medical information : 1800 675 229

ANSSER nurse free telephone support service: 1800 APOMINE (1800 276 6463)

New Zealand:


Medical Information : 0800 736 363


ANSSER nurse free telephone support service: 0800 APOMINE (0800 276 6463)



## WARNINGS / IMPORTANT RISK INFORMATION

If the following instructions are not followed, there is a risk of incorrect medication, incorrect dosage, disease transmission or infection. Seek immediate medical attention if you have any health concern.

 Read this **instructions for use** before using your *D-mine*<sup>®</sup> Pen. Follow the instructions for use of your *D-mine*<sup>®</sup> Pen, pen needle and your cartridge and use your *D-mine*<sup>®</sup> Pen only after consultation with your physician and/or health care professional.

 Ensure **correct handling by the intended user**

- The *D-mine*<sup>®</sup> Pen must not be used by blind or visually impaired patients without the help of someone who has been trained accordingly. In case of hearing or tactile impairment consult your physician.
- Store your *D-mine*<sup>®</sup> Pen, the pen needles as well as the cartridges so that they are out of reach of children or other people who are not familiar with the correct method of use.



### Ensure **correct application**

- Use your *D-mine*<sup>®</sup> Pen only as part of the treatment prescribed by your physician and/or health care professional.
- Use the cartridges, dosage amounts and pen needles prescribed by your physician and/or health care professional. Any changes must be made under the supervision of a physician and/or health care professional.
- Before each injection, check that your *D-mine*<sup>®</sup> Pen contains the correct type of medication. Check that the cartridge is undamaged and that the medication corresponds to the details on the product leaflet.
- The pen needles and the cartridge must be used by only one person, in order to prevent transmission of disease.
- Do not expose your *D-mine*<sup>®</sup> Pen to any extreme temperatures through direct exposure to sunlight or cold (e.g. in a freezer compartment).
- Use and store your *D-mine*<sup>®</sup> Pen at a temperature between 5 and 35°C. If a cartridge of Apomine Intermittent is in the Pen, the Pen should be kept below 25°C.
- Do not drop your *D-mine*<sup>®</sup> Pen and avoid knocking it against hard surfaces. Never immerse your *D-mine*<sup>®</sup> Pen in water. Generally handle it with care. Never use your *D-mine*<sup>®</sup> Pen if you have any doubts about its correct functioning.
- Never try to repair a damaged *D-mine*<sup>®</sup> Pen yourself. In case of a damaged or defective *D-mine*<sup>®</sup> Pen, please contact the ANSSER nurse Service (see page 23).



### Ensure correct delivery of medication

- Before each injection, carry out a function check (Chapter “Priming / Function Check” step 1 – 4) to prevent incorrect dosage caused by air in the cartridge or a blocked pen needle. Use a new pen needle if priming is not successful.
- Check after each injection according to your physician’s and/or health care professional’s instructions whether medication drips from the pen needle or *D-mine*® Pen, or exudes from the injection site. If the medication drips from the pen needle or *D-mine*® Pen, or exudes from the injection site, follow your physician’s and/or health care professional’s instructions regarding the handling of potential under-dosage. Seek medical attention if you have any health concern.
- In the event of interruption of injection by releasing the push-button, check on the display the amount of medicine not delivered. The remaining amount can be injected by pressing the push-button again.
- In the event of accidental medication injection seek immediate medical attention.

## CONFIRMED LIFE SPAN

The continued dosing accuracy and requirements according to EN ISO 11608-1 have been verified for the amount of injections and cartridge exchanges as defined hereinafter in the table below from the date of first use:

Daily dose [mg]	Injections/day [#]	Dose/injection [mg]	Life span [months]
3	3	1	36
6	3	2	36
9	3	3	36
12	3	4	36
15	3	5	36
16	4	4	30
20	4	5	30
24	4	6	30
25	5	5	24
30	5	6	24

Daily dose [mg]	Injections/day [#]	Dose/injection [mg]	Life span [months]
30	6	5	18
36	6	6	18
35	7	5	12
42	7	6	12
40	8	5	12
48	8	6	12
45	9	5	12
54	9	6	12
50	10	5	12
60	10	6	12

## WARRANTY

EVER Neuro Pharma GmbH as manufacturer of the *D-mine*<sup>®</sup> Pen warrants the proper functioning of the *D-mine*<sup>®</sup> Pen for a period of two years from the date of delivery when used in accordance with these Instructions For Use.

Your *D-mine*<sup>®</sup> Pen is distributed in Australia by Pfizer Australia Pty Ltd and in New Zealand by Pfizer New Zealand Limited (refer to page 32 of these Instructions For Use for contact details).

Your *D-mine*<sup>®</sup> Pen has been developed for use with Apomine<sup>®</sup> Intermittent in 3 mL cartridges (Apomorphine hydrochloride hemihydrate 10 mg/mL) in compliance with EN ISO 11608-1 and may be used only with these cartridges.

If you believe that your *D-mine*<sup>®</sup> Pen is not functioning in accordance with these Instructions For Use, contact the ANSSER nurse service in your location immediately (refer to Page 23 of these Instructions For Use for contact details).

**How to make a claim:** To make a warranty claim you will need to contact the ANSSER nurse service in your location.

ANSSER will advise you of the return process, which in many cases will involve returning your *D-mine*<sup>®</sup> Pen to your ANSSER nurse. Defective *D-mine*<sup>®</sup> Pen will be replaced and shipped at no cost to you.

**Consumer law rights:** The benefits given to you under this warranty are in addition to other rights and remedies you may have at law.

For Australian patients we advise that: Our goods come with guarantees that cannot be excluded under the Australian Consumer Law. You are entitled to a replacement or refund for a major failure and compensation for any other reasonably foreseeable loss or damage. You are also entitled to have the goods repaired or replaced if the goods fail to be of acceptable quality and the failure does not amount to a major failure.

**Conditions:** EVER Neuro Pharma GmbH and its distributors do not accept liability for any loss or damage suffered, caused by or arising out of: (a) improper or careless use, handling or cleaning misuse, accident, or normal wear and tear; (b) any failure to use the *D-mine*<sup>®</sup> Pen in accordance with these Instructions For Use; (c) the use of the *D-mine*<sup>®</sup> Pen with a medical device or accessories or consumables other than those recommended by EVER Neuro Pharma GmbH.

## DISPOSAL

Your *D-mine*<sup>®</sup> Pen can be disposed off according to the instructions by the local authorities or with your household waste.  
Your *D-mine*<sup>®</sup> Pen does not contain substances harmful to the environment.

## LABELLING AND SYMBOLS

The *D-mine*<sup>®</sup> Pen fulfills the regulations of the EU directive on medical products, 93/42/EEC.

Technical Data			
Length:	170 mm	Scale:	0.5 mg
Diameter:	17 mm	Resolution of injection volume:	0.5 mg
Weight:	40 g	Max. dose/injection:	6 mg
Filling Volume:	3 mL	Storage conditions:	5 – 35°C
Display:	mg	Operating conditions:	5 – 35°C



Manufacturer's name and address



Protect from heat and sunlight



Warning: important safety information in instructions for use



Date of manufacture



Protect from moisture



Batch number



Item number



Read instructions for use



Marking for conformity with the European Medical Device Directive and number of the notified body





**Manufacturer:**

EVER Neuro Pharma GmbH  
Oberburgau 3  
4866 Unterach, Austria



**Australian Sponsor:**

Pfizer Australia Pty Ltd  
Sydney, NSW Australia  
Medical information : 1800 675 229  
medicalaffairs.anz@pfizer.com



**New Zealand Sponsor:**

Pfizer New Zealand Limited  
PO Box 3998  
Auckland, New Zealand, 1140  
Toll free number : 0800 736 363

EVER Pharma, and *D-mine* Logo are trademarks of EVER Neuro Pharma GmbH.

Revision: 06/2018

D-mine\_IFUPen\_64363\_AUS\_V02