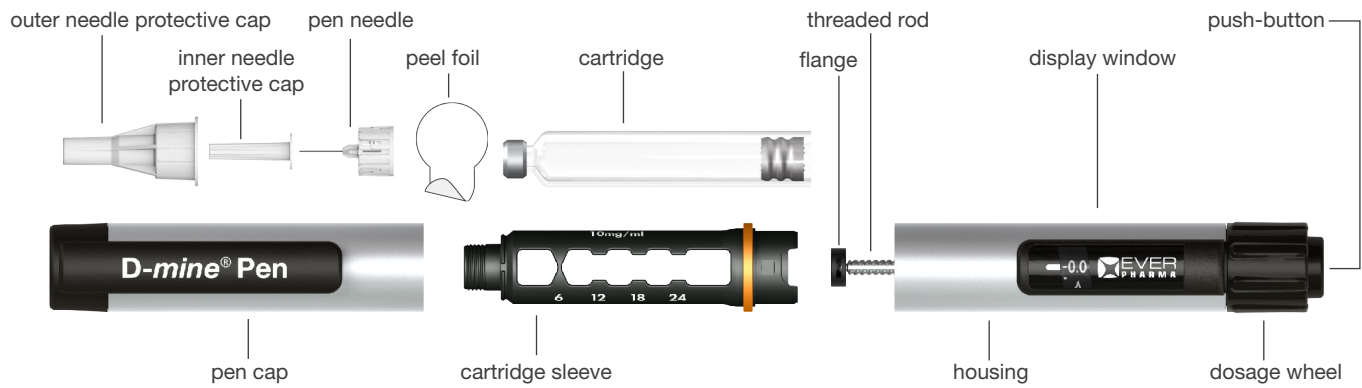
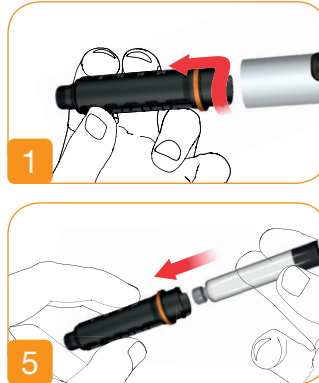


DESCRIPTION OF PARTS OF D-mine® PEN THERAPY

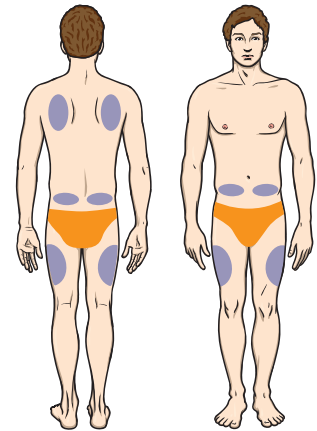


CHANGING THE D-mine® CARTRIDGE

1. Twist the cartridge sleeve anti-clockwise until you hear a click
2. Remove the cartridge sleeve from housing
3. Leave the rod extended
4. Remove and dispose of the empty glass cartridge ensuring you retain the cartridge sleeve
5. Insert new cartridge into cartridge sleeve
6. Reconnect the Cartridge sleeve to the housing (this will push the threaded rod into the housing)
7. Twist the cartridge sleeve onto the housing clockwise until you hear a click



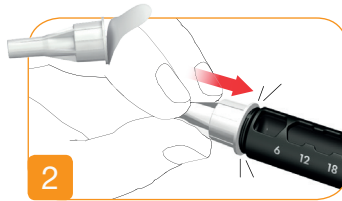
You may use the following injection sites:



Ensure you rotate injection sites for each injection.
Massage is helpful to reduce skin irritation

ATTACHING THE NEEDLE & SETTING THE DOSE

1. Pull off the peel foil from the PEN needle
2. Push and screw the needle onto the cartridge sleeve clockwise until it is on firmly



3. Set the dose by turning the dosage wheel clockwise until the prescribed dose is visible in the display window
4. You may correct or reduce the dose by turning the dosage wheel anti-clockwise

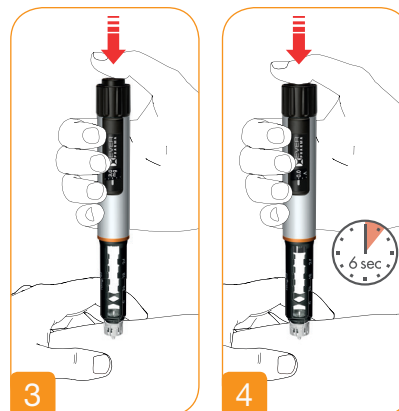


PREPARING AND GIVING THE INJECTION

Note: you can interrupt the injection by releasing the push-button. The remaining amount of medicine not delivered can be seen on the display and can be injected by pressing the push button again
Note: Use the injection technique as recommended by your physician and/or health care professional

3. Once the needle has been inserted into the skin press the button in fully for injection. Keep the push button held down during medication discharge. The PEN will click while the medication is discharging
4. Keep the needle in the skin for a further 6 seconds after the medication has been discharged.
5. Check that the PEN is fully discharged. The displays window position shows 0.0
6. Place the outer PEN needle shield in the notch located in your carry case to dispose of the needle correctly and safely

1. Once the dose is set remove the PEN cap and the outer and inner needle protective cap
2. Keep the outer needle protective cap to safely remove and dispose of the PEN needle after use



Please note: the same cartridge can be used for up to 15 days after opening*